

# WA Monthly Swing Service Market Outcomes

July-2018



The following table provides the information on the operation of the Swing Service market on the North Metro and South Metro sub-networks over a 13 month rolling window.

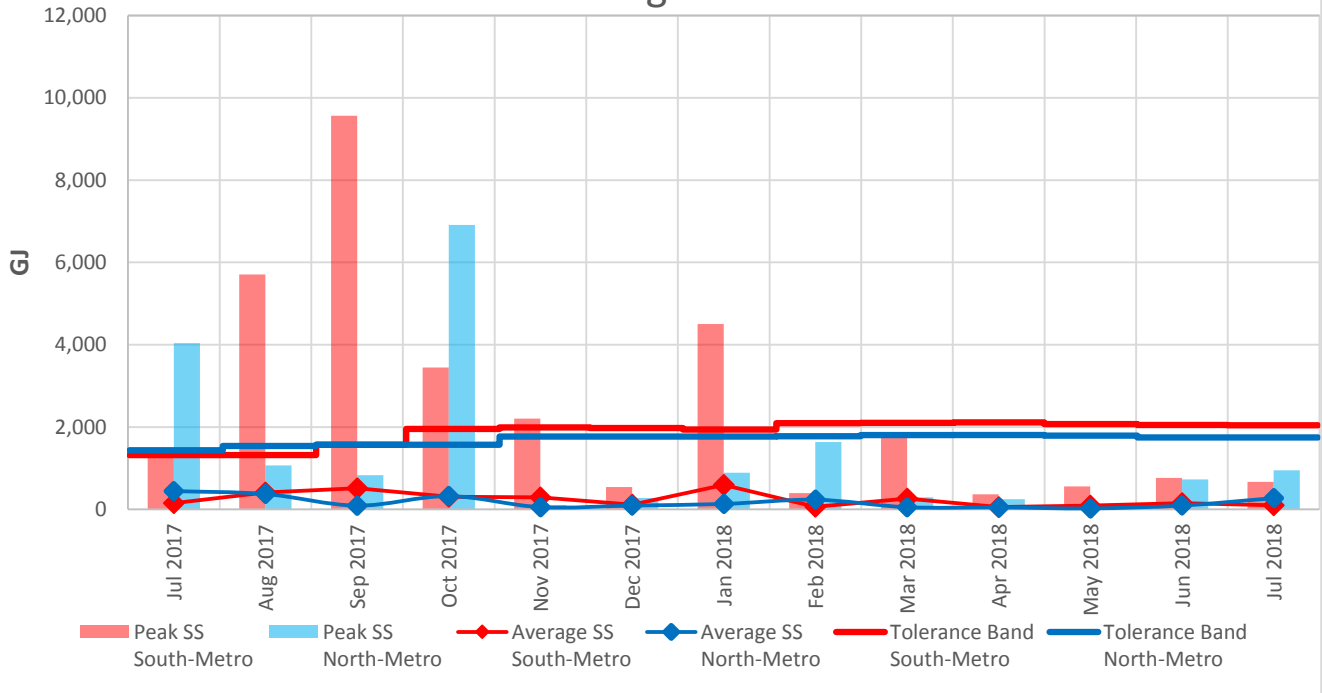
Month	Metro-South Sub-Network		Metro-North Sub-Network	
	Peak SS South-Metro	Average SS South-Metro	Peak SS North-Metro	Average SS North-Metro
July 2017	1,453	151	4,038	444
August 2017	5,704	411	1,069	372
September 2017	9,563	511	828	90
October 2017	3,449	305	6,913	321
November 2017	2,204	288	107	53
December 2017	543	114	273	92
January 2018	4,502	593	891	131
February 2018	393	61	1,633	234
March 2018	1,755	261	293	52
April 2018	363	56	245	47
May 2018	559	91	94	23
June 2018	764	150	724	92
July 2018	666	99	946	272
<b>Average</b>	<b>2-year</b>	<b>180</b>	<b>2-year</b>	<b>223</b>

**North Metro** Average and peak Swing Service volumes in the North Metro sub-network were at normal levels for the month of July. There were minor spikes for gas day 3 July 2018, 16 July 2018 and 17 July 2018.

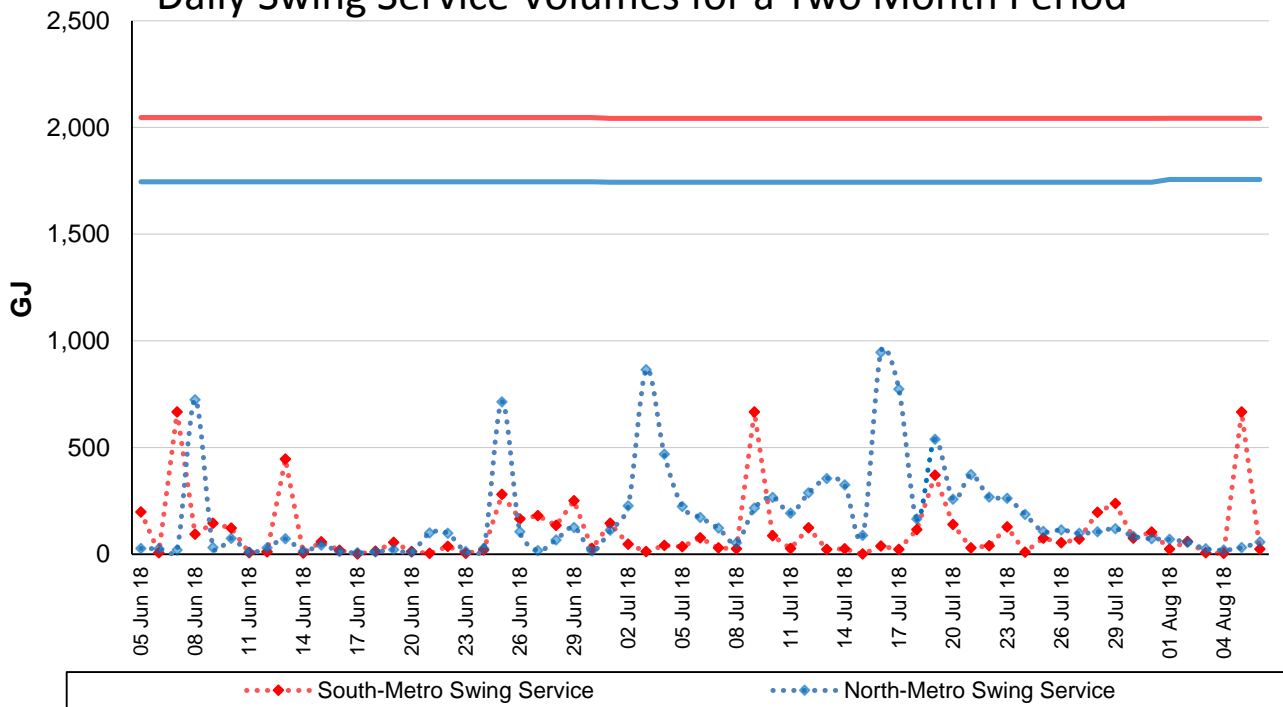
**South Metro** Average and peak Swing Service volumes in the South Metro sub-network were at normal levels for the month of July. There were minor spikes for gas day 9 July 2018 and 19 July 2018.



### 13 Month Swing Service Results



### Daily Swing Service Volumes for a Two Month Period



### Terms:

- Peak SS means the maximum amount of Swing Service recorded on a day during that month.
- Average SS means the average amount of Swing Service for any day in that month.
- Peak Trend is the linear trend of the Peak SS data, using the least squares method.
- Average Trend is the linear trend of the Average SS data, using the least squares method.
- Tolerance Band is a marker – AEMO will investigate and report on any Swing Service spikes that are larger than the Tolerance Band. The Tolerance Band is defined as a volume equal to the mean amount of Swing Service over the last 2 years plus 3 standard deviations.