

The following table provides the information on the operation of the Swing Service market on the North Metro and South Metro sub-networks over a 13 month rolling window.

Month	Metro-South Sub-Network		Metro-North Sub-Network	
	Peak SS South-Metro	Average SS South-Metro	Peak SS North-Metro	Average SS North-Metro
July 2016	521	97	461	95
August 2016	636	53	434	86
September 2016	3,721	640	1,617	412
October 2016	1,983	225	3,481	268
November 2016	1,175	205	6,598	793
December 2016	1,837	204	1,129	119
January 2017	519	124	451	104
February 2017	1,135	167	1,340	143
March 2017	1,468	192	290	62
April 2017	1,313	216	663	133
May 2017	721	98	711	84
June 2017	1,042	124	694	87
July 2017	1,453	151	4,038	444
<b>Average</b>	<b>Since March 2016</b>	<b>186</b>	<b>2-year</b>	<b>148</b>

**North Metro**

Average and peak Swing Service volumes in the North Metro sub-network were near normal levels for the month of July 2017, with the exception of two Swing Service spikes for gas days 13/07/2017 & 15/07/2017.

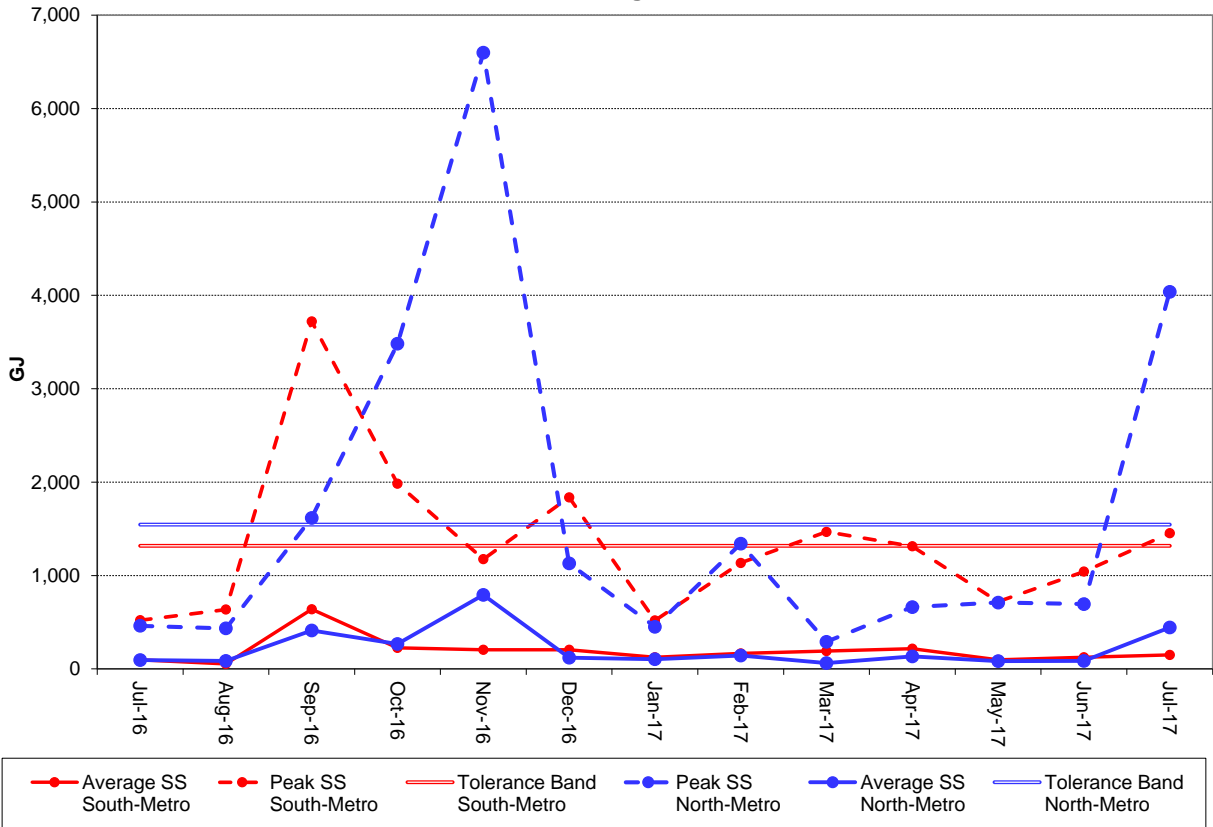
- For gas day 13/07/2017, AEMO received a notice under clause 255(1) of the WA Retail Market Procedures (the “Procedures”) on Friday 14/07/2017 9.52am (AEST) from APT Parmelia. The notice indicated that it had flowed less gas than scheduled for gas day 13/07/2017 due to being pressured out. AEMO provided a notice to market participants on this matter under clause 255(2).
- For gas day 15/07/2017, AEMO is investigating the cause of the Swing Service spike. If necessary, AEMO will commence the compliance process once the investigation is complete.

**South Metro**

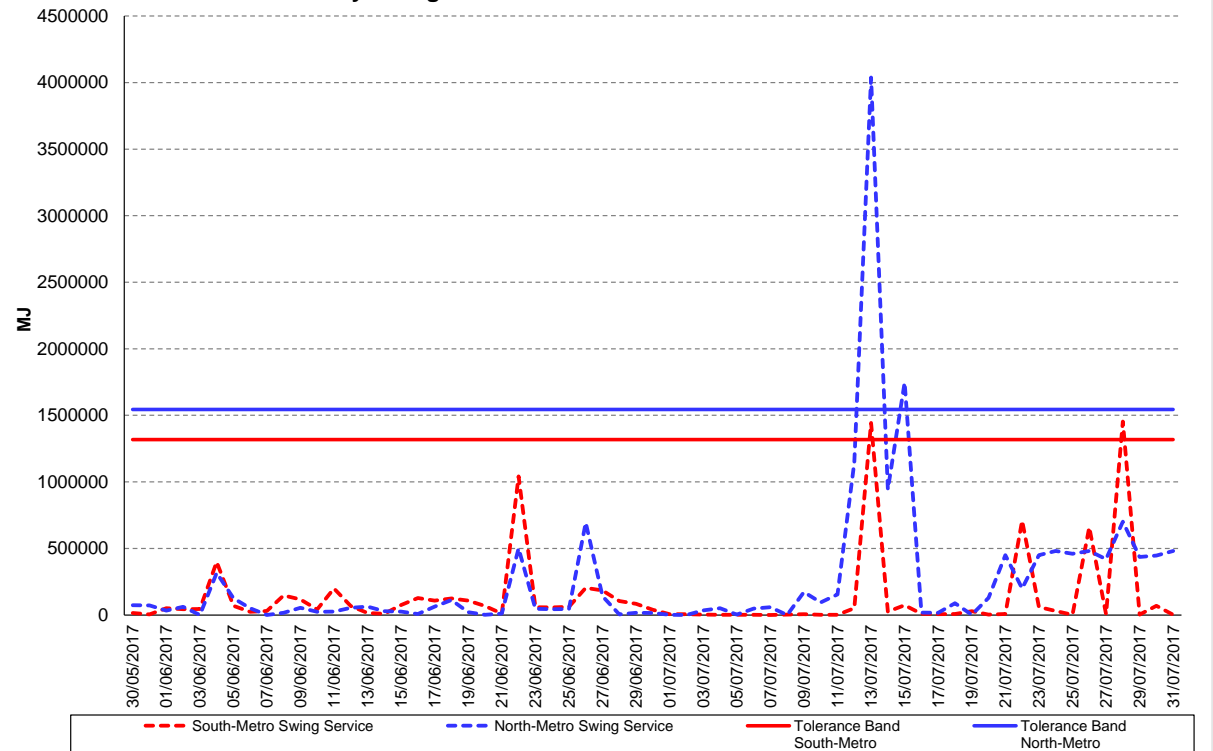
Average and peak Swing Service volumes in the South Metro sub-network were near normal levels for the month of July 2017, with the exception of two Swing Service spikes on gas days 13/07/2017 & 28/07/2017. AEMO is investigating the cause of the Swing Service spikes. If necessary, AEMO will commence the compliance process once the investigation is complete.



13 Month Swing Service Results



Daily Swing Service Volumes for a Two Month Period



#### Terms:

- Peak SS means the maximum amount of Swing Service recorded on a day during that month.
- Average SS means the average amount of Swing Service for any day in that month.
- Peak Trend is the linear trend of the Peak SS data, using the least squares method.
- Average Trend is the linear trend of the Average SS data, using the least squares method.
- Tolerance Band is a marker – AEMO will investigate and report on any Swing Service spikes that are larger than the Tolerance Band. The Tolerance Band is defined as a volume equal to the mean amount of Swing Service over the last 2 years plus 3 standard deviations.